

F. Mendelssohn-Bartholdy: Symphony N<sup>o</sup> 3 in A minor, Op. 56 "Scottish"

1st MOVEMENT  
Assai animato

418 *pp* *perdendosi* 419 *p*

420 *p*

*dim.*

Detailed description: This block contains the first three staves of music. The first staff (measures 418-419) starts with a piano (*pp*) dynamic and a *perdendosi* (fading) instruction. The second staff (measures 419-420) continues with a piano (*p*) dynamic. The third staff (measures 420-421) ends with a *dim.* (diminuendo) instruction. The music is in 6/8 time and features a melodic line with various articulations and dynamics.

2nd MOVEMENT  $\text{♩} = 126 +$   
Vivace non troppo  
a 2

421 *mf* *cresc.*

*f* *sf* *sf*

1st Vln. *pp* *pp* *sf* *p*

*sf* *p* *pp*

422 *pp* *pp* *sf* *p*

*sf* *p* *pp*

423 *fp* *sf*

(a) 424 *p* *p*

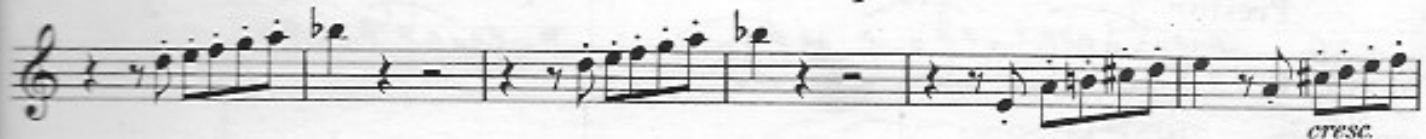
*p* *Cl.*

Detailed description: This block contains the second movement, starting at measure 421. It is in 2/4 time and marked 'Vivace non troppo'. The first staff (measures 421-422) begins with a mezzo-forte (*mf*) dynamic and a *cresc.* (crescendo) instruction. The second staff (measures 422-423) features a first violin part (*1st Vln.*) with dynamics *pp*, *pp*, *sf*, and *p*, and a main melody with dynamics *f*, *sf*, and *sf*. The third staff (measures 423-424) continues with dynamics *sf*, *p*, and *pp*. The fourth staff (measures 424-425) starts with a *fp* (fortissimo piano) dynamic and ends with a *sf* dynamic. The fifth staff (measures 425-426) is marked '(a)' and includes a clarinet part (*Cl.*) with dynamics *p* and *p*.



4th MOVEMENT

Allegro vivacissimo



F. Mendelssohn-Bartholdy: Symphony No 4 in A major, Op. 90 "Italian"

1st MOVEMENT

Allegro vivace



2nd MOVEMENT

Andante con moto



W. A. Mozart: Overture "Don Giovanni," K.V. 527

(a) Molto allegro

Musical score for the first part of the Overture "Don Giovanni" by Mozart. It consists of three staves of music in G major, 2/4 time. The first staff begins with a forte (*f*) dynamic, followed by piano (*p*), and then forte (*f*) again. The second staff includes a section marked (b) with dynamics *f*, *p*, and *f*. The third staff continues with dynamics *p*, *f*, and *p*.

W. A. Mozart: Overture "Così fan tutte," K.V. 588

Andante

Musical score for the first part of the Overture "Così fan tutte" by Mozart. It consists of one staff of music in C major, 3/4 time. The tempo is marked Andante. The dynamics are piano (*p*), forte (*f*), and piano (*p*).

Presto

Musical score for the second part of the Overture "Così fan tutte" by Mozart. It consists of one staff of music in C major, 3/4 time. The tempo is marked Presto. The dynamics are piano (*p*).

Musical score for the third part of the Overture "Così fan tutte" by Mozart. It consists of one staff of music in C major, 3/4 time. The dynamics are piano (*p*).

Musical score for the fourth part of the Overture "Così fan tutte" by Mozart. It consists of one staff of music in C major, 3/4 time. The dynamics are forte (*f*) and piano (*p*).

Musical score for the fifth part of the Overture "Così fan tutte" by Mozart. It consists of one staff of music in C major, 3/4 time. The dynamics are piano (*p*).

Musical score for the sixth part of the Overture "Così fan tutte" by Mozart. It consists of one staff of music in C major, 3/4 time. The dynamics are piano (*p*).

G. Rossini: Overture "La Scala di Seta"

582 *Andantino*  
*p dolce*

*mp*

*ad lib.*

583 *p*

R. Schumann: Symphony No 2 in C major, Op.61

1st MOVEMENT  
Un poco più vivace

653 *espr.*  
*fp*

(a) Allegro ma non troppo *fp*

(b) *f*

2nd MOVEMENT. SCHERZO  
TRIO I Allegro vivace

655 *1st Vln.*  
*p 3* *rit.* *a tempo*

*poco rit.* *a tempo*

*fp*

TRIO II

656 *1st Vln.*  
*mf*

*mf*

3rd MOVEMENT  
Adagio espressivo

657 *1st Vln.*  
*fp* *p cantabile* *fp*

*fp* *cresc.*

658 *mf* *p*

659 *p*

660 *Bsn.*  
*pp cresc.* *p*

661 *mf*

## J. Strauss: Overture "The Gypsy Baron"

Allegro moderato

1st Vin.

699 *f* *p*

Lento

Cello, Bass

700 *p* *p* *3* *3* *3*

Andantino

1st Vin.

701 *pizz.* *p* *poco rit.* *a tempo* *mf*

*poco rit.* *mp* *a tempo* *3* *3* *3* (col Cello)

*rit.* *più rit.*

P. I. Tschaikowsky: Symphony N<sup>o</sup> 4 in F minor, Op. 36

## 1st MOVEMENT

(a) Moderato con anima (♩ = in movimento di Valse)

(Solo) *mf* *cresc.* *f* *mf* (b)

702

703 *ff*

Moderato assai, quasi Andante

704 *p*

*p cantabile*

