

2022 Bass Trombone Audition Music

University of Utah

1. Beethoven 5, Mvt. 4. Play from Measure 374 to 395.
2. Blazhevich: Lento Etude 14. Play from the Beginning up to the fermata before Tempo I.
3. Shostakovich 5, Mvt. 1. Play from 3rd bar of Rehearsal 29 to Rehearsal 32.
4. Shostakovich 5, Mvt. 4. Play from Rehearsal 97 through 3rd bar of 100.
5. Elgar: Enigma Variations. VII Troyte. Play from 4 bars before Rehearsal 25 to the end of the movement (Rehearsal 30).
6. Elgar: Enigma Variations. XIV Finale.
Play from Rehearsal 62 to 63.
Play from 68 to 69.

Recordings of the orchestral pieces can be found online. Listen to several versions of each piece for style, dynamics and musicality.

Audition Priorities:

1. Tone
2. Rhythm
3. Intonation

Musically expressive playing is always the ultimate goal. It can only happen if tuning, rhythm, and tone are solid.

Practice auditioning at home:

Pick up your instrument and walk in to your “performance room.” Introduce yourself and say where you’re from and which degree program you’re in. You can play a warmup note if you want (make it a good one, with a rich sound).

Take several deep breaths to relax on stage and go for it!

Fünfte Symphonie

1

Play from measure 375 to 395

TROMBONE BASSO

L. van Beethoven, Op. 67

Allegro con brio }
Andante con moto } tacent

Allegro (♩ = 96) poco ritard. a tempo poco rit. a tempo poco rit. a tempo

6 1 8 1 32 1 87

19 1. 76 7 poco rit. a tempo 8 poco rit.

a tempo 95 Viol. I

cresc. 2 3 4 5 6 7

Allegro (♩ = 84)

374 ff

394

393 3 A 2 1

407 ff 6

422 f 7 B 1 5 p

443 f sf sf ff 2

455 1. 2. 16 C 5

Play from the beginning up to the Tempo I.

Here is another opportunity to sing a song with a beautiful, simple effortless sound. Match all notes going in and out of registers. Dynamics and intensity of the phrases are extremely important.

№ 14. **Lento**
p dolce

Con moto

a tempo
f allargando

Tempo I
rit. *p*

Shostakovich Symphony 5: Movement 1. Play the first two lines (29-32).

29 [Poco sostenuto (♩ = 126)]

30

31

32

33

34

35

ff

poco stringendo

ff espress.

2

1

Detailed description: This block contains the musical notation for measures 29 through 35 of Shostakovich's Symphony No. 5, Movement 1. The notation is in bass clef with a common time signature. Measure 29 is marked 'Poco sostenuto' with a tempo of quarter note = 126. It features a half note followed by a series of eighth notes. Measure 30 continues the eighth-note pattern. Measure 31 has a 'poco stringendo' instruction and features a series of eighth notes. Measure 32 has a 'ff' dynamic and a '2' above the staff. Measure 33 has a 'poco stringendo' instruction and features a series of eighth notes. Measure 34 has a 'ff espress.' instruction and features a series of eighth notes. Measure 35 has a '1' above the staff and features a series of eighth notes.

Shostakovich Symphony 5: Movement 4. Play 97 to the end of the excerpt.

97 Allegro non troppo (♩ = 88)

98 (♩ = 104)

99

100 (♩ = 108)

f < *fff*

ff marc.

accelerando poco a poco

3

4

ff

Detailed description: This block contains the musical notation for measures 97 through 100 of Shostakovich's Symphony No. 5, Movement 4. The notation is in bass clef with a common time signature. Measure 97 is marked 'Allegro non troppo' with a tempo of quarter note = 88. It features a series of eighth notes. Measure 98 has a tempo of quarter note = 104 and features a series of eighth notes. Measure 99 has a tempo of quarter note = 108 and features a series of eighth notes. Measure 100 has a tempo of quarter note = 108 and features a series of eighth notes. Dynamics include 'f', 'fff', and 'ff marc.'. The instruction 'accelerando poco a poco' is present between measures 97 and 98. Measure numbers 3 and 4 are written below the staff for measures 99 and 100 respectively.

TROMBONE BASSO.

15 *Moderato.* **V.**
(R. P. A.)
Fag. 4 **16** 4 **17** 7

18 3 Corni **SOLO.**
mf *p* *pp* *dim.* *attacca*

19 *Andante.* **VI.**
(Ysobel.)
4 **20** 4 **21** 5 **22** 5 2 *rit.*

23 *Presto.* **VII.**
(Troyte.)
Timp. *cresc.* Fl. *p* *f* *p*

24 4 *mf* *dim.* *pp* *p* *f*

25 1 2 3 4 *ff*

26 3 *sf* *ff* **27** 11 4 *VI.I.* *p*

28 *ff* **29** 3 *ff* *ffz* *p* *fff*

30 *Allegretto.* **VIII.**
(W. N.)
Cl. 7 **31** 10 **32** 7 1 *rit. attacca*

Play from 4 bars before 24 to the end of the movement (30).

TROMBONE BASSO.

XII.

(B. G. N.)

52 *Andante.** *rit. attacca*

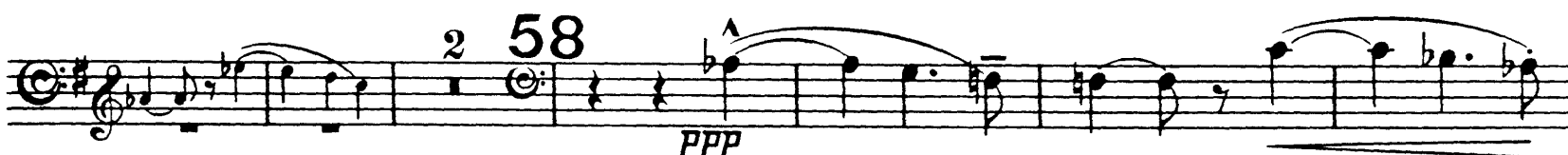
* This bar should be omitted except when Var. XII. is played separately.

XIII.

(* * *)

55 *Moderato.*

Cl.

*poco rall. tranquillo**ppp**ppp**Come prima.**f dim. molto pp**poco rall. molto tranquillo rit.*

XIV.

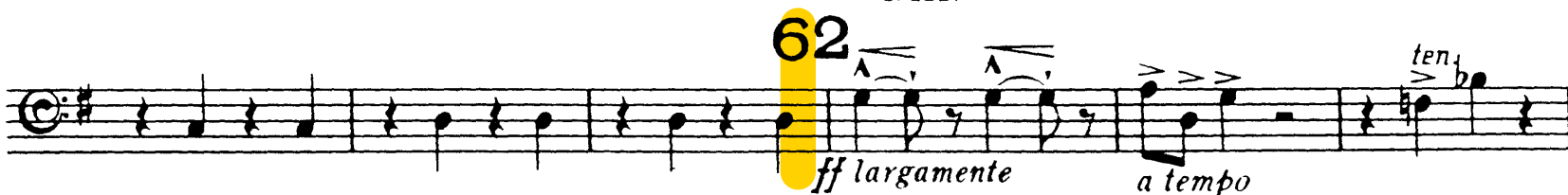
(E. D. U.)

Finale.

Play from 62 to 63.

61 *Allegro.*

VI. I.

*ppp stacc.**cresc.**cresc.**ff largamente**a tempo**ten.**sf*

Tuba.

63

poco animato

TROMBONE BASSO.

64 *fff largamente a tempo* *ten.* *ten.* *sf*

65 *tranquillo* *dim. molto pp* 7 66 4 Corni

67 *sfp* *sfp* *sfp* *cresc.*

68 *Grandioso* *ff* *simile* 1

69 *stringendo* *ff* *fff* *simile* *rf* *Tuba*

70 *TEMPO I^o* 1 *fff* *pp* 6 71 *fff largamente a tempo*

72 *sf* *sf*

73 5 6 *Trombe.* *sf* *pp* *pppp*

74 10 75 1 2 3 4 5 1 *animando* *pp* *cresc.*

76 *ff* 3 *ff* 1