

Bordogni

Moderato (♩ = 104)

No. 15

Play  
8vb



A handwritten musical score for a piece titled "No. 15" by Bordogni. The score is written on four staves in bass clef, with a key signature of two flats (B-flat and E-flat) and a 3/4 time signature. The tempo is marked "Moderato" with a quarter note equal to 104 beats per minute. The music features a variety of note values including eighth, quarter, and half notes, as well as rests. Phrasing is indicated by curved lines (arcs) over groups of notes. The first staff begins with a downward-pointing arrow and the handwritten text "Play 8vb". The second staff includes a triplet of eighth notes. The fourth staff ends with a double bar line.

## 20.

## A. COPLAND







# HOE-DOWN

from

## "RODEO"

Bass Trombone

A. COPLAND

21

**Allegro**

7 [1] 4 1 [2] 4 [3] 14 [4] 6 [5] 8

[6] 8 [7] 8 [8] [8] [9]

[10] 8 [11] 7

3 [12]

[13] 8 [14]

[15] 8 [16]

[17] 8

[18] 2 *rit. molto* 6 [19] 8 4 [20]

[21] 5 [22] 10



# Elgar: Enigma Variations

2

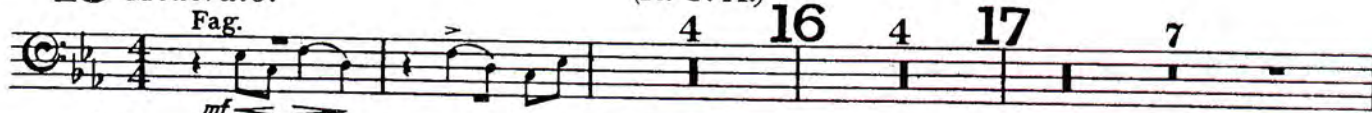
TROMBONE BASSO.

V.

(R. P. A.)

15 *Moderato.*

Fag.



18 3

Corni

SOLO.

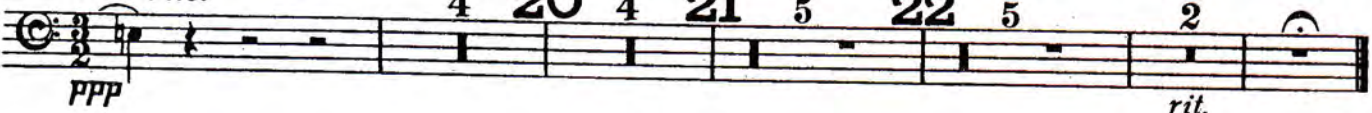


VI.

(Ysobel.)

19

*Andante.*



VII.

(Troyte.)

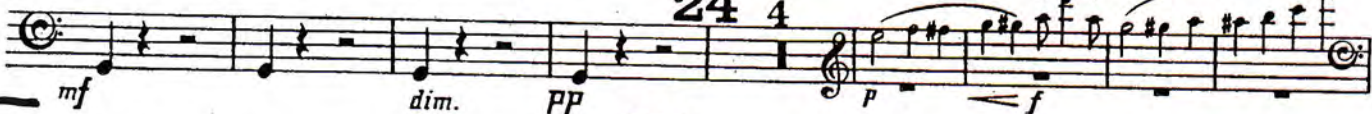
23

*Presto.*

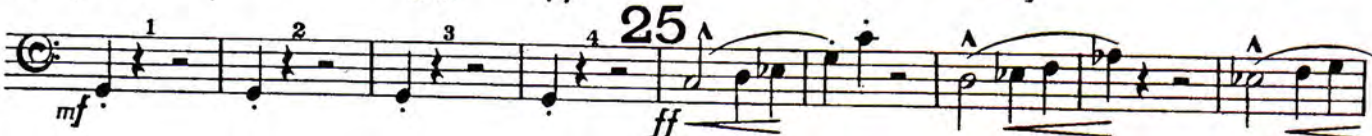
Fl.



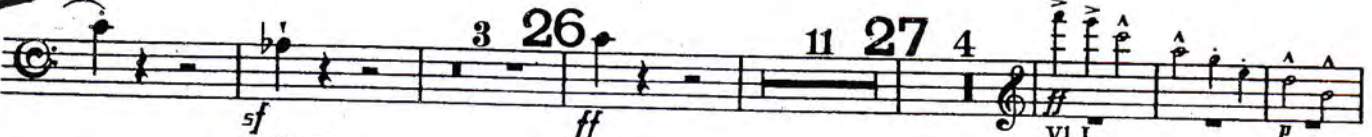
24 4



25



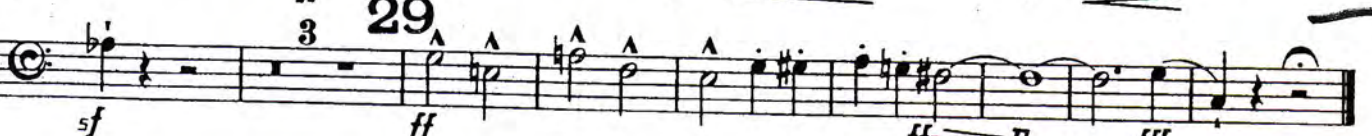
26 3



27 4



28



29 3

VIII.

(W. N.)

30

*Allegretto.*

Cl.



rit. attacca



TROMBONE BASSO.

3

IX.

(Nimrod.)

33 *Adagio.* VI.I. 6 34 11 35 4 VI.I.

*ppp*

36 *mf* *f* *legatissimo* *p*

37 *p* *cresc.* *mf* *molto cresc.* *ff* *rit.* *pp*

X.

(Dorabella.)

Intermezzo.

38 *Allegretto.* 9 39 10 40 7 41 11 42

5 43 5 44 11 45 8 46 4

XI.

(G. R. S.)

*Allegro di molto.*

Vls.

Fag.

47 *ff*

48 *ff sf*

49 2 5 1 50 2

Fag. *mf stacc.* *f* *ff* *ten*

*ff* *simile*

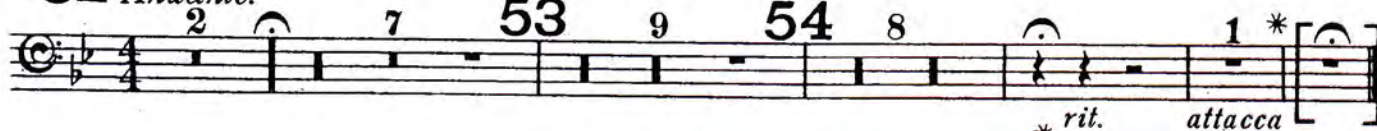
51 4 *legato* *mf* *cresc.* 1



## TROMBONE BASSO.

## XII.

(B. G. N.)

52 *Andante.*\* *rit. attacca*

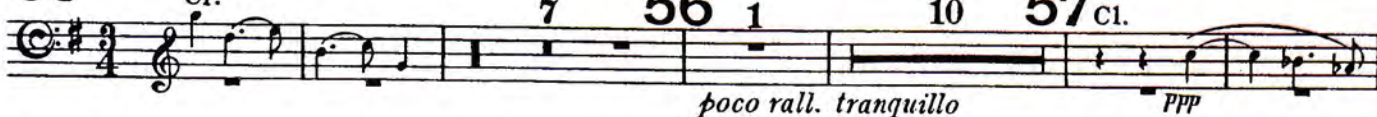
This bar should be omitted except when Var. XII. is played separately.

## XIII.

(\* \* \*)

55 *Moderato.*

Cl.

*poco rall. tranquillo**ppp**ppp**Come prima.**f dim. molto pp**poco rall. molto tranquillo rit.*

## XIV.

(E. D. U.)

## Finale.

61 *Allegro.*

Vl. I.

*ppp stacc.**cresc.**cresc.**ff largamente**a tempo**ten.**sf*

Tuba.

63

*poco animato*



## TROMBONE BASSO.

5

64 *fff largamente a tempo* *ten.* *sf* *ten.*

65 *tranquillo* *dim. molto pp* 66 *Corni*

67 *cresc.* *sfp* *sfp* *sfp*

68 *Grandioso* *ff* *simile* *1*

69 *stringendo* *ff* *move* *fff* *Tuba* *rf* *simile*

70 *TEMPO I?* *fffz* *pp* 71 *fff largamente a tempo*

72 *sf* *sf*

73 *Trombe.* *sf* *pp* *pppp*

74 *animando* 75 *pp* *cresc.*

76 *ff* *ff* *1*