

F. Mendelssohn-Bartholdy: Symphony No 3 in A minor, Op. 56 "Scottish"

1st MOVEMENT
Assai animato

418 *pp* *perdendosi* 419 *p*

420 *p*

dim.

Detailed description: This block contains the first three staves of the first movement. The first staff (measures 418-419) starts with a piano (*pp*) dynamic and a *perdendosi* marking. The second staff (measure 420) begins with a piano (*p*) dynamic. The third staff concludes with a *dim.* (diminuendo) marking.

2nd MOVEMENT $\text{♩} = 126 +$
Vivace non troppo

421 *mf* *cresc.*

f *sf* *sf*

1st Vln. *pp* *pp* *sf* *p*

sf *p* *pp*

422 *pp* *pp* *sf* *p*

sf *p* *pp*

423 *fp* *sf*

(a) 424 *p* *p*

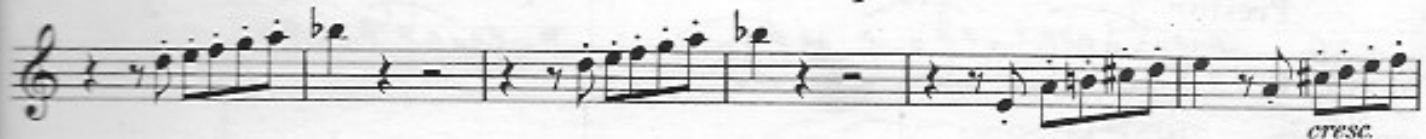
p *Cl.*

Detailed description: This block contains the second movement, starting at measure 421. The first staff (measures 421-422) is marked *mf* and *cresc.*. The second staff (measures 422-423) features dynamics *f*, *sf*, and *sf*. The third staff (measures 423-424) includes dynamics *sf*, *p*, and *pp*. The fourth staff (measures 424-425) is for the 1st Violin, marked *pp*, *pp*, *sf*, and *p*. The fifth staff (measures 425-426) includes dynamics *sf*, *p*, and *pp*. The sixth staff (measures 426-427) is marked *fp* and *sf*. The seventh staff (measures 427-428) is marked (a) and *p*. The eighth staff (measures 428-429) is for the Clarinet, marked *p* and *p*.



4th MOVEMENT

Allegro vivacissimo



F. Mendelssohn-Bartholdy: Symphony No 4 in A major, Op. 90 "Italian"

1st MOVEMENT

Allegro vivace



2nd MOVEMENT

Andante con moto



W. A. Mozart: Overture "Don Giovanni," K.V. 527

(a) Molto allegro

Musical score for the first system of the Overture "Don Giovanni" by W. A. Mozart. The score is in G major, 2/4 time, and consists of three staves. The first staff begins with a treble clef and a key signature of one sharp (F#). The tempo is marked "Molto allegro". The first measure is a whole rest. The first staff contains measures 1 through 10, with dynamics *f* and *p* alternating. The second staff contains measures 11 through 14, with dynamics *f*, *p*, and *f*. A section marker (b) is placed above the first measure of the second staff. The third staff contains measures 15 through 20, with dynamics *p*, *f*, and *p*.

W. A. Mozart: Overture "Così fan tutte," K.V. 588

Andante

Musical score for the first system of the Overture "Così fan tutte" by W. A. Mozart. The score is in C major, 3/4 time, and consists of one staff. The tempo is marked "Andante". The first measure is a whole rest. The staff contains measures 1 through 6, with dynamics *p*, *f*, and *p*.

Presto

Musical score for the second system of the Overture "Così fan tutte" by W. A. Mozart. The score is in C major, 3/4 time, and consists of one staff. The tempo is marked "Presto". The first measure is a whole rest. The staff contains measures 7 through 10, with dynamics *p*.

Musical score for the third system of the Overture "Così fan tutte" by W. A. Mozart. The score is in C major, 3/4 time, and consists of one staff. The staff contains measures 11 through 14, with dynamics *p*.

Musical score for the fourth system of the Overture "Così fan tutte" by W. A. Mozart. The score is in C major, 3/4 time, and consists of one staff. The staff contains measures 15 through 18, with dynamics *f* and *p*.

Musical score for the fifth system of the Overture "Così fan tutte" by W. A. Mozart. The score is in C major, 3/4 time, and consists of one staff. The staff contains measures 19 through 22, with dynamics *f* and *p*. A first ending bracket labeled "Fl." spans measures 19 and 20.

Musical score for the sixth system of the Overture "Così fan tutte" by W. A. Mozart. The score is in C major, 3/4 time, and consists of one staff. The staff contains measures 23 through 26, with dynamics *p*.

G. Rossini: Overture "La Scala di Seta"

582 *Andantino*
p dolce

mp

ad lib.

583 *p*

R. Schumann: Symphony No 2 in C major, Op.61

1st MOVEMENT
Un poco più vivace

653 *espr.*
fp

(a) Allegro ma non troppo *fp*

(b) *f*

2nd MOVEMENT. SCHERZO
TRIO I Allegro vivace

655 *1st Vln.*
p 3 *rit.* *a tempo*

poco rit. *a tempo*

fp

TRIO II

656 *1st Vln.*
mf

mf

3rd MOVEMENT
Adagio espressivo

657 *1st Vln.*
fp *p cantabile* *fp*

fp *cresc.*

658 *mf* *p*

659 *p*

660 *Bsn.*
pp cresc. *p*

661 *mf*

J. Strauss: Overture "The Gypsy Baron"

Allegro moderato

1st Vin.

699 *f* *p*

Lento

Cello, Bass

700 *p* *p* *3* *3* *3*

Andantino

1st Vin.

701 *pizz.* *p* *poco rit.* *a tempo* *mf*

poco rit. *mp* *a tempo* *3* *3* *3* (col Cello)

rit. *più rit.*

P. I. Tschaikowsky: Symphony N^o 4 in F minor, Op. 36

1st MOVEMENT

(a) Moderato con anima (♩ = in movimento di Valse)

(Solo) *mf* *cresc.* *f* *mf* (b)

702

703 *ff*

Moderato assai, quasi Andante

704 *p*

p cantabile

P. I. Tschaikowsky: "Swan Lake," Ballet Suite

Nº 1. SCENE
Moderato

760

Harp

mf *p espress.*

cresc. *f*

Nº 3. DANSE DES CYGNES
(a) Allegro moderato

761

I

II

Bsn. *p* *p*

(b)

p *f*

P. I. Tschaikowsky: "Romeo and Juliet," Overture-Fantasy

Allegro giusto

762

C. Ang Solo

mf espress.

763

Ob.

p *dolce ma sensibile*

cresc. *cresc.*

mf cresc. *f*

p dolce